

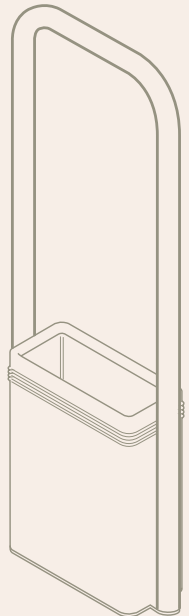


INNISIBLE®  
CREATIONS

by PROCare

## Planter fitting instructions

CONCRETE & MASONRY



Scan the QR code to view  
our Planter fitting video

# Fitting your Planter

Thank you for purchasing your Invisible Creations Planter grab rail.

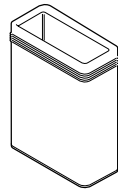
If you want to install your Planter grab rail onto concrete floor, steps or a wall, we're here to help. While it may seem like a tough task, it's simpler than you may think. We'll show how easy it can be to install your Planter grab rail.

## What's in your pack?

Wing Nut (x2)



Planter



Grab Rail (x1)

## Tools you will need

Hammer drill & drill bits (for concrete)

Screwdriver(s)

Tape measure

PPE Equipment

Socket set/spanners

Hammer

Allen wrench

Marker pen/pencil

## Typical fixings (Not included)



Hex or allen expanding bolt



Concrete anchor



Resin bolt

## Choosing the right location

The first thing that you need to do is survey your location. Make sure that it will be a suitable place for a Planter grab rail. Determine where you can mount your Planter grab rail flanges. This could be on the floor or steps.

## Gather your equipment

Make sure to gather your tools and equipment. This may seem like an obvious step, but think about how many times you've started a project and had to make multiple trips back and forth to get this tool for that part. Let's take care of that from the beginning.

# Attaching your Planter grab rail



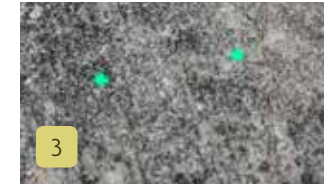
1

Mark your drill bit for hole depth and an allowance. Before you start drilling make sure that you clean the area. This will help ensure proper contact and make it safer to work around.



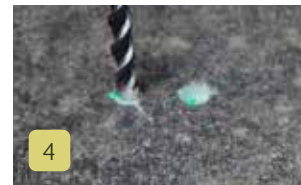
2

Mark holes for the base. Place the Planter on the ground where you will install the Planter. Mark the holes through the base with a marker.



3

Put the Planter aside. You should clearly see where the holes need to be placed for your anchors. Grab your hammer drill and drill into each of the marked locations. Make sure you use the appropriate drill bit for the anchor you are using.



4

Using the appropriate drill start drilling the holes, before drilling too far check the hole alignment. Place the base plate over your hole marking and ensure your holes will align to the base plate.



5

To ensure proper contact, make sure you clean out any debris you made from drilling the holes.



6

Continue to drill your holes to the depth marked on your drill bit. Clean debris away from your holes.



7

Insert into your chosen fixings (expanding bolt/resin bolt) into your four holes. If you have chosen the resin bolt fixture allow the resin to cure, with a stud in place as per manufacturers instructions.



8

Position the base plate to allow the 'bolts' to pass through the base plate into the previously positioned inserts.



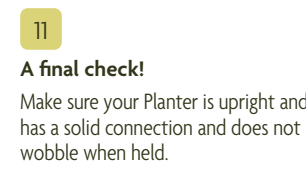
9

Fully tighten the 'bolts' (or nuts in case of resin bolt) using appropriate tool. If you have used a resin bolt fixture, remove the excess stud bar.



10

Lower the Planter tub on to the 2 studs and secure with the 2 wing nuts provided.



11

### A final check!

Make sure your Planter is upright and has a solid connection and does not wobble when held.





If you have any issues installing your dual-purpose Planter grab rail please contact Invisible Creations and we will be pleased to help.

To take care of your Planter you only need a damp cloth to keep your Planter clean. Do NOT use harsh chemicals. Check the nuts periodically to see if they need tightening.

**INVISIBLE®**

CREATIONS

01942 206004

[hello@invisiblecreations.co.uk](mailto:hello@invisiblecreations.co.uk)

[www.invisiblecreations.co.uk](http://www.invisiblecreations.co.uk)

Invisible Creations is a brand of PROCare Shower & Bathroom Centre Ltd.

Invisible Creations at PROCare

Warranty Statement

Invisible Creations products by PROCare are covered by our 5-year warranty.

Where indicated, our 5-year warranty assures complete confidence in the quality of our products. Any product with the 5-year warranty assurance, that becomes defective by reason only of manufacturing workmanship will, at our discretion, be replaced free of charge. The liability under this warranty is limited to 'supply only' of the replacement product. Proof of purchase would be required in this event.

This warranty does not extend to normal wear and tear, product abuse, misuse, improper installation, damage by external causes or failures caused by operation of the equipment outside of that products specification.

Full terms and conditions are available from our website [www.procare-ltd.co.uk](http://www.procare-ltd.co.uk).

